

TABLE OF CONTENTS

1.	Specifications & Parts	2
1.1	Overview	2
1.2	Specifications	2
1.3	Parts List	3
2.	Operating instructions	4
2.1	One-handed operation	5
2.2	Setting up Bench Clamps	6
2.3	Cutting Straight Lines	9
2.4	Cutting Circles	10
3.	Maintenance	14
3.1	Installing a new Punch/Die	15
4.	Frequently Asked Questions	19
5.	Warranty	20
6.	More great products	22

1. SPECIFICATIONS & PARTS

1.1 OVERVIEW

- The Nibbler will cut sheet metal, corrugated and rounded tubular sections etc, in straight lines and curves with radius as small as 8mm (5/16")
- The cutting head (Die) can be rotated into four positions to face forwards, backwards left or right, quickly and without being dismantled.
- The tool will cut quickly without creating sparks or distortions, and will alleviate jagged edges.

1.2 SPECIFICATIONS

Power Source: Any power drill, electric or air, with 9mm chuck & speed range 1,500-3,000 RPM

Cut Width: 4mm

Max. Cut Gauges:

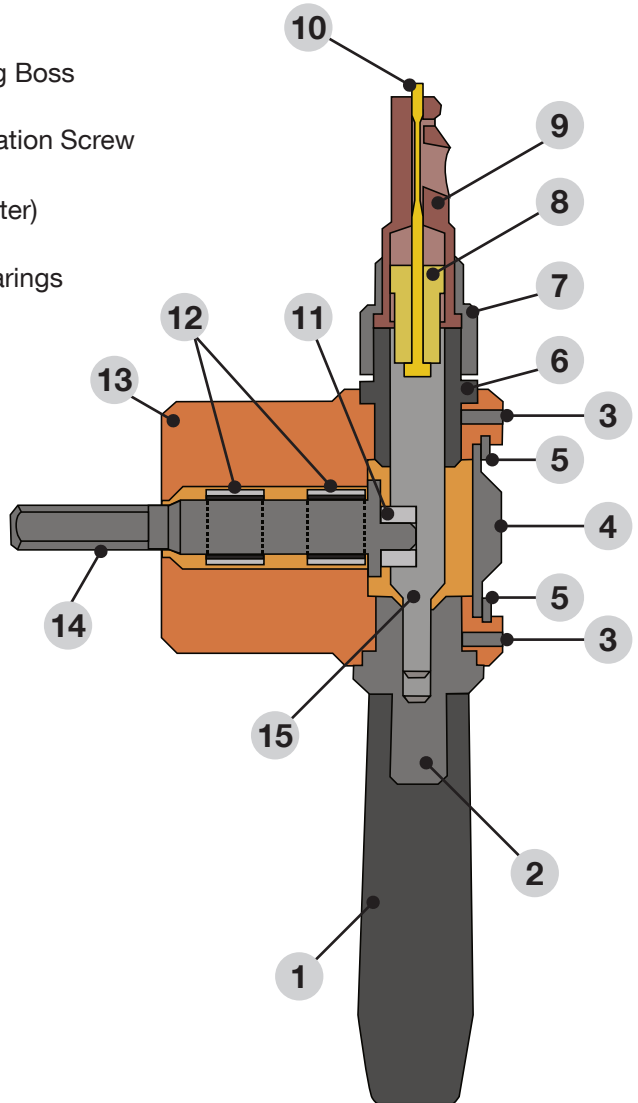
Colourbond	up to 0.7mm	(21 Gauge)
Corrugated Iron	up to 0.7mm	(21 Gauge)
Stainless Steel	up to 1.0mm	(18 Gauge)
Mild Steel	up to 1.6mm	(16 Gauge)
Aluminium Checker Plate	up to 1.6mm	(16 Gauge)
Plastic & PVC Pipes	up to 2.0mm	(14 Gauge)
Flat Aluminium	up to 2.0mm	(14 Gauge)
Brass	up to 2.0mm	(14 Gauge)
Copper	up to 2.0mm	(14 Gauge)
Laminex & Veneer	up to 2.0mm	(14 Gauge)

We recommend that a separate punch and die be kept aside specifically for Stainless Steel.

1. SPECIFICATIONS & PARTS

1.3 PARTS LIST

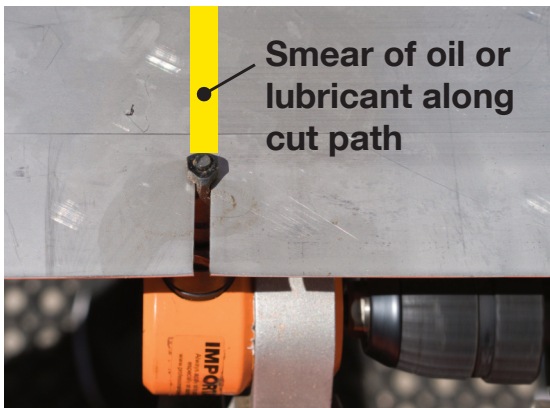
Part no.	Description
1	KJT/01 Handle
2	KJT/02 Handle Boss
3	KJT/03 M6 Grub Screw
4	KJT/04 End Cap
5	KJT/05 Circlip
6	KJT/06 Die Locking Boss
7	KJT/07 Die Cap
8	KJT/08 Punch Location Screw
9	KJT/09 Die
10	KJT/10 Punch (Cutter)
11	KJT/11 Slider
12	KJT/12 Needle Bearings
13	KJT/13 Body
14	KJT/14 Drive Shaft
15	KJT/15 Shaft



2. OPERATING INSTRUCTIONS

Before fitting the drill ensure the drill is switched off and unplugged from the power supply

1. Insert the Nibbler Drive Shaft into the drill chuck and check to ensure the chuck jaws do not rub on the Nibbler
2. Select the desired position of the die of the Nibbler (KJT/9) by slackening the nose cap (KJT/7).
3. Ensure your work piece does not exceed the specifications listed in section 1.2.
4. Apply a smear of oil or lubricant such as WD40 to the tool cutting edge and along the work piece cutting line.
5. Connect the drill to the power supply and switch on.
6. Bring the cutter to the work piece whilst in motion.
DO NOT start Nibbler whilst head is against work piece.
7. Hold the drill & handle of the Nibbler firmly as you proceed but do not force the Nibbler along.
8. When you wish to stop cutting, leave drill running whilst the Nibbler is removed.
DO NOT stop Nibbler whilst head is against work piece.



Note: it is especially important to apply lubricant to cut path when cutting Aluminium.

2.1 ONE-HANDED OPERATION

The Professional Nibbler can be used to cut one-handed, only with the specially designed One-Handed Operation Handle (sold separately). Do not attempt to cut one-handed without this attachment.

The One-Handed Operation Handle fits drills with a standard 43mm Collar. To fit the handle to your Nibbler, slide handle over drill chuck, onto the drill collar and tightened the bolt on the handle. Slide nibbler handle into groove in One-Handed Operation Handle, and tighten drill chuck.



2.2 SETTING UP BENCH CLAMPS



STEP 1

Attach first bench clamp to the edge of the work bench and ***loosely tighten the T-bolt.***

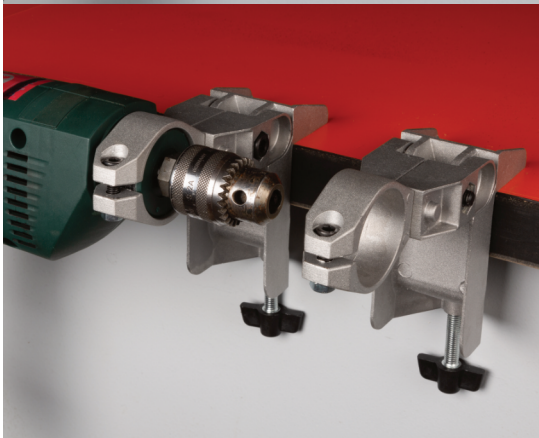
You will lock the clamp into position later.



STEP 2

Slide the drill into the bench clamp and tighten with allen key for a firm hold on the drill.

Do not over-tighten.



STEP 3

Mount second bench clamp onto the work bench and ***loosely tighten the T-bolt.***

You are ready to insert the Professional Nibbler.

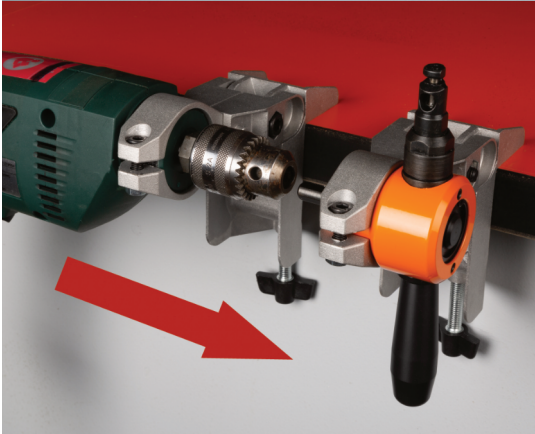
2.2 SETTING UP BENCH CLAMPS



STEP 4

Insert the Professional Nibbler into bench clamp and tighten with allen key provided for a firm hold.

Do not over-tighten.



STEP 5

Slide the clamps along the bench until the Professional Nibbler's drive shaft is inserted into the drill's chuck.



STEP 6

Tighten drill chuck to secure the Professional Nibbler and drill together.

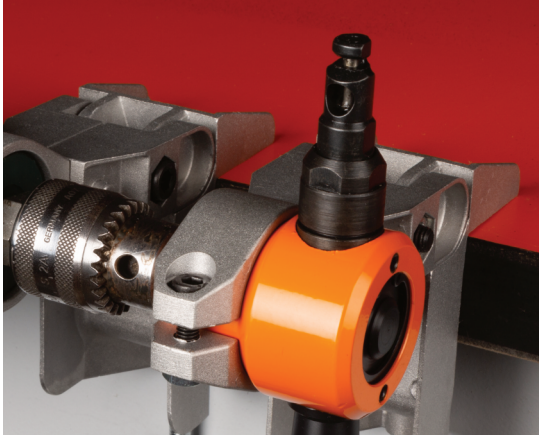
Leave 2-3mm gap between chuck jaws and Professional Nibbler body so they don't rub.

2.2 SETTING UP BENCH CLAMPS



STEP 7

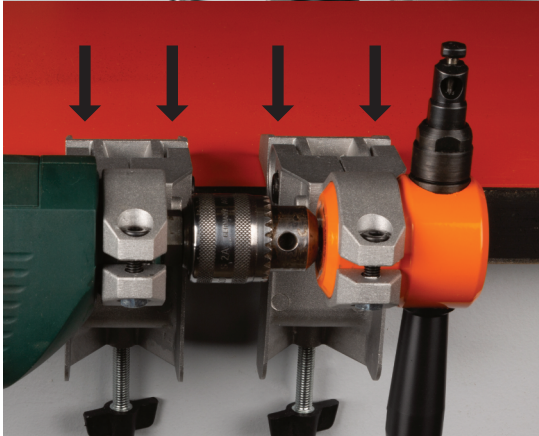
Now tighten T-bolts on each bench clamp for a secure hold onto work bench.



STEP 8

Ensure the Die is facing away from the bench and the Punch (cutter) is visible.

You are ready to begin your job.



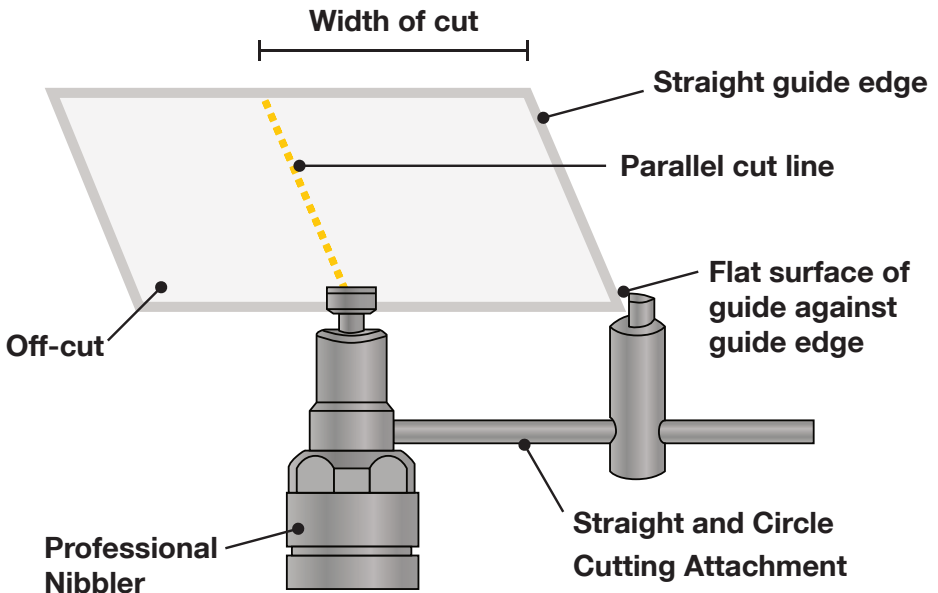
STEP 9 (OPTIONAL)

Drive screws into the holes on top of the clamps to secure the bench clamps further to the work bench.

2.3 CUTTING STRAIGHT LINES

Cutting a straight line following an existing straight edge profile with The Professional Nibbler and the Straight and Circle Cutting Attachment (sold separately):

1. Set the required distance on the Guide of the Straight and Circle Cutting Attachment from its flat surface to the inside of the punch edge – See diagram below.
2. Holding the flat edge of the guide against the straight edge of the material, start cutting with the tool whilst pressing the edge of the material firmly against the guide. This will duplicate the profile of the edge of the material at the line of the cut.



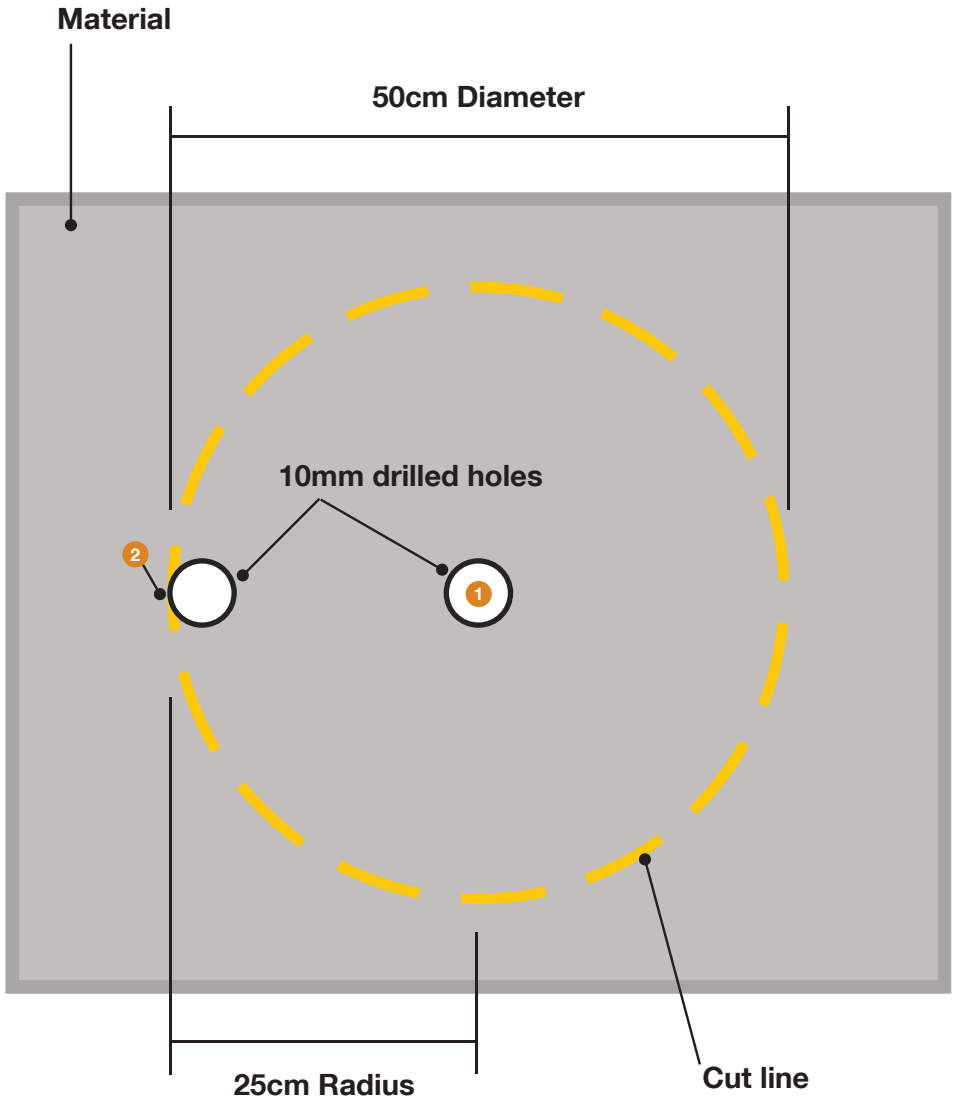
2.4 CUTTING CIRCLES

Cutting a circle with The Professional Nibbler and the Straight and Circle Cutting Attachment (sold separately):

1. Attach your Professional Nibbler to the Bench Clamps as shown on page 8, then attach the Straight and Circle Cutting Attachment to the Die of the Nibbler.
2. Measure and prepare your material by first marking the centre point **(1)** of the intended circle then measure and mark **(2)** the desired radius. E.G. for a 50cm circle, measure a 25cm radius as shown on page 13.
3. Drill a 10mm hole at the centre point **(1)**.
4. At your outer mark **(2)** measure 5mm back towards the centre and drill a second 10mm hole. Note the outside of this hole should be flush with the outside of the intended circle.
5. Position the sheet of metal over the bench mounted tool, placing the Die of the Nibbler in the outer hole, and the Guide of the Circle Cutting Attachment in the centre hole. Make sure the Die and Guide are firmly apart in the holes and tighten the grub screw of the Guide on the shaft of the attachment.
6. Now you are ready to cut. Start up the tool and carefully rotate the sheet metal on the centre guide until the circle is completely cut out. Remember to apply a smear of oil or lubricant to the cut line.

Please note: This attachment CANNOT be used for cutting corrugated metal.

2.4 CUTTING CIRCLES







3. MAINTENANCE

The Punch and/or Die should be renewed when the cutting edges start to show signs of wear.

INSTALLING A NEW PUNCH / DIE

See next page for detailed instructions on changing the Die and Punch.

MAINTENANCE SCHEDULE

When it comes time to replace the Punch and/or Die, we suggest that one Die is replaced for every three Punch replacements.

When cutting through Stainless Steel and older corrugated iron the Punch and Die will wear faster.

WHEN IS IT TIME TO CHANGE THE DIE?

If the half-moon shapes cut from the material are sticking together, this means the Die is showing signs of wear. Some plastic materials will always have their half moon shapes sticking together. Test the Professional Nibbler first on a piece of metal for a better indication of whether the Die is wearing.

3.1 INSTALLING A NEW PUNCH / DIE



STEP 1

Loosen the Die Cap anti clockwise with an adjustable spanner.

Note the Die only needs to be replaced once in every three Punch (cutter) replacements.



STEP 2

Lift and remove the Die from the Professional Nibbler.



STEP 3

Loosen, unscrew, and remove the Punch Locking Nut from the Shaft with the Punch inside.

3.1 INSTALLING A NEW PUNCH / DIE



STEP 4

Slide the Punch (Cutter) out of the Punch Locking Nut.



STEP 5

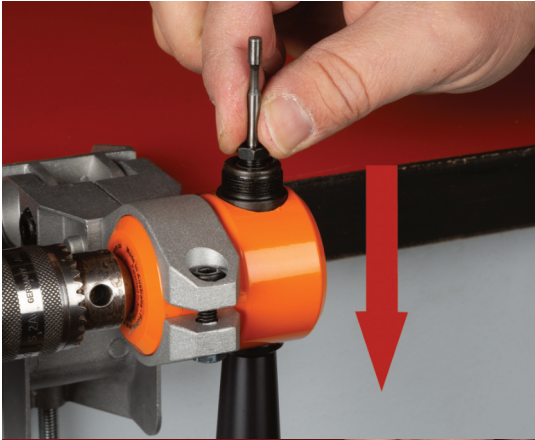
Begin to reassemble by inserting the new punch (cutter) into the Punch Locking Nut.



STEP 6

Slide the punch locking nut down to the bottom of new Punch (cutter).

3.1 INSTALLING A NEW PUNCH / DIE



STEP 7

Insert the punch locking nut back into the shaft and begin to tighten with fingers first.



STEP 8

Tighten the Punch Locking Nut with adjustable spanner but do not over tighten.



STEP 9

You will notice four slots in the bottom of the Die and a split pin the Boss.

3.1 INSTALLING A NEW PUNCH / DIE



STEP 10

When placing into position make sure slot fits over the split pin and sits flat on the Die Boss.



STEP 11

Place the Die back into position over the Punch.



STEP 12

Slide Die Cap down onto the Die and then tighten.

Do not overtighten.

Your tool is now ready to use.

4. FREQUENTLY ASKED QUESTIONS

What kind of drill do you need to run the tool?

The Professional Nibbler can be used with standard electric drills, cordless drills and pneumatic drills. The drill should be rated between 300 – 500 Watts with a speed of 1500 – 3000 RPM to run the Professional Nibbler properly and allow cutting of the listed materials and thicknesses.

Can I use a cordless drill with the Professional Nibbler?

Yes, it will run a little slower, but it will cut. This is ideal for small jobs (especially up on the roof, saves pulling a lead up)

How long do the cutter blades last?

Each cutter will cut 300 metres on corrugated and car panel steel. (Always spray CRC/WD40 along cutting path).

How do I change the cutting blades?

The cutting blades can be changed by removing the Die with a standard adjustable spanner, and takes only a few minutes. Ensure the Die is tightened firmly once you are done.

What does the 10 year warranty cover?

The Professional Nibbler by Newstyle Direct P/L is guaranteed for 10 years from date of purchase. This does not include wear and tear on consumable parts. (Proof of purchase required).

What are some of the uses for the Professional Nibbler?

The Professional Nibbler can be used to cut plastic, brass, aluminium, car panel steel and corrugated iron. The tool will enable you to build sheds, perform home renovations, mini orb, and trim decks. Perfect for professionals, DIY work around the home, workshop or farm, or crafts. You can now save time and effort cutting sheet metal.

5. WARRANTY

The body of the Professional Nibbler by Newstyle Direct Pty Ltd has 10-year guarantee to the purchaser from the date of purchase. If used commercially, the body of the Professional Nibbler is guaranteed for 5 years from the date of purchase. This guarantee does not include wear and tear on consumable parts. Proof of purchase is required.

WARRANTY TERMS & CONDITIONS

Newstyle Direct Pty Ltd warrants each new Professional Nibbler, to the original purchaser thereof, to be used and maintained properly. The warranty of the body will be in effect for the life of the Professional Nibbler from the date of purchase or if used commercially, for 5 years from the date of purchase. This shall be in lieu of any other warranty, expressed or implied, including, but not limited to, any implied warranty of merchantability or fitness for a particular purpose.

Newstyle Direct Pty Ltd shall repair or replace, at its option and without cost to the original purchaser, any Professional Nibbler that has been found to be defective and is within the period of the warranty. All freight to and from the Newstyle Direct warehouse is to be paid by the customer.

The liability of Newstyle Direct under this warranty shall be limited solely to repair or replacement of the Professional Nibbler body within warranty period; and Newstyle Direct shall not be liable, under any circumstances, for consequential or incidental damaged, including, but rights and you many also have other rights vary from state to state.

5. WARRANTY

Under no circumstances will Newstyle Direct Pty Ltd be responsible for any expense in connection with any repairs made by anyone other than the factory or authorised service station unless repairs have been specifically authorised in writing by Newstyle Direct Pty Ltd.

WARRANTY CLAIMS

Phone: 03 9489 1177 (Mon-Fri 9am – 5pm AET)

Email: enquiries@newstyledirect.com.au

Address: Newstyle Direct Pty Ltd,
18 Montefiore Street, Fairfield, VIC 3078, Australia

Register your warranty today by filling out the form below and mailing it to us at the above address or by visiting professionalnibbler.com.au/warranty-registration.

Professional Nibbler Warranty Registration

Name _____

Address _____

Post Code _____ State _____ Country _____

Email Address: _____

Product(s) purchased: _____

Purchase date: _____ Invoice No.: _____

Supplier/Location: _____

How learnt of the product?: _____

Please send me info on new products and specials: **YES / NO**



VERSAMAX 5in1 TOOL SYSTEM

Powerful 20V 2.0ah Li-Ion Battery.

With 5 rugged & handy attachments, Versamax replaces a whole tool shed of appliances, in a compact and lightweight package. Change attachments in seconds. Kit includes: Drill/Hammer Drill, Reciprocating Saw, Multi-Tool, Spiral Saw, Impact Driver.

Order today and get FREE Air Pump and EXTRA Battery!



GERMAN ARTU DRILL BITS

German Engineered Drills for a wide range of jobs.

Robust titanium and tungsten carbide tip, and a high-tech bonding process allow these drill bits to withstand temperatures of up to 1000°C.

Comes with FREE gifts: ARTU Sharpening Stone & Rod Saw

CHECK OUT OUR OTHER GREAT PRODUCTS



DIAMOND CORE DRILL BITS & HOLE SAWS

Ideal for Marble, Porcelain, Granite and Glass.

These Diamond Core Drill Bits & Hole Saws have a single rim sintered Diamond Tip, made with metal powder mixed with diamond particles pressed and afterwards sintered in a furnace at an incredibly high heat.

They're Long Lasting!!!



TUNGSTEN GRITTED HOLE SAWS

Great for wall sockets, pipelines & cable ducts.

Tough Tungsten Carbide particles replace standard teeth on conventional hole saws. These particles are self-sharpening, when a particle chips, a new sharp surface is created in its place.

Longer lasting than conventional Hole Saws. Made with the latest technology in the industry.

