

VERSAMAX

20V

2.0Ah Lithium Ion

Owners Guide

Your complete guide to operating and maintaining the VersaMax 5-in-1 System.

LEARN MORE



ARC
ADVANCED RAPID CONNECTOR



Battery included



Handy carry case



1 hr Fast charging

New Tool Attachments

AUTOMATIC NAIL HAMMER

This heavy hitting tool drives nails into very hard wood without any effort required at all. Makes your Jobs so much easier.



POWER SCISSORS

This attachment makes cutting thin plastics, cardboard, and leather fast and easy. Ideal to cut around corners or curves. Great for arts and crafts jobs.



VACUUM CLEANER

This handy attachment is suitable for light Jobs. It sucks up saw dust, tile dust, general dirt and keeps your workplace environment nice and clean. Great for on the go!



***These brand new tool attachments are all sold separately.
Visit versamax.com.au for more information.***

TABLE OF CONTENTS

WHAT'S INCLUDED	4
MAIN CONTROLS & FEATURES	5
BATTERY & CHARGING	6
ASSEMBLY & OPERATION	8
OPERATING THE TOOLS:	
DRILL	10
RECIPROCATING SAW	11
SPIRAL SAW	12
IMPACT DRIVER	14
MULTI PURPOSE TOOL	15
AIR PUMP	16
MAINTENANCE	17
IMPORTANT SAFETY INFORMATION	18
WARRANTY	21

WARNING - IMPORTANT INFORMATION

The main tool body is wired at the factory. To avoid shock or fire, replace the main tool body immediately if it is damaged in any way. Before using your new VersaMax Tool System, it is critical that you read and understand all safety rules. Failure to follow these rules could result in serious injury to you or damage to the equipment.

YOUR VERSAMAX KIT INCLUDES:

1. 1 x Main driver
2. 1 x 20V 2.0Ah Li-Ion Battery
3. 1 x Battery Charger
4. 1 x Drill / Hammer Drill Tool Head
5. 1 x Impact Driver Tool Head
6. 1 x Spiral Saw Tool Head
7. 1 x Reciprocating Saw Tool Head
8. 1 x Multi-Tool Tool Head
9. 1 ea Metal & Wood Saw Blades
10. 1 x Plunge Cut Blade (Wood)
11. 1 x Plunge Cut Blade (Metal)
12. 1 x Scraper Blade
13. 1 x Spiral Saw Bit
14. 1 x Collet Wrench (for Spiral Saw)
15. 1 x Allen Key
16. 1 x Sanding Plate + 3 x Sanding Pads



MAIN CONTROLS & FEATURES

Tool-Head Socket

Insert the tool heads in here as per instructions.

ARC Lock Switch

One per side. Rotate these in the direction indicated to release the Advanced Rapid Connector and change tool heads.

Direction Switch

(Forward / Off / Reverse)

Variable Speed Trigger

Varies speed of driver depending on the force applied.

Wrist Strap

Battery Release Button

Press in and slide the battery forward to release.



BATTERY & CHARGING



DO NOT CHARGE BATTERY BEFORE FIRST USE:

Lithium Ion Batteries should be fully discharged before charging. Your battery will be partially charged already, operate the tool until the battery is fully discharged before recharging the battery.

LI-ION BATTERY CHARGING - READ BEFORE USE

For optimum performance, only recharge the battery when drained.

Before recharging, always operate the tool until the battery becomes fully drained and no longer powers the tool effectively.

Li-ion batteries will only reach a full charge after 3-5 recharging cycles (usage followed by recharging). Do not be alarmed if the battery capacity seems lower than expected for the first couple of cycles.

Li-ion batteries develop a “memory” if they are recharged when they still hold a partial charge, causing them to eventually only charge up to this “memory” level. With proper care, this battery can be recharged hundreds of times.

BATTERY USAGE AND CARE - READ BEFORE USE

1. Do not charge the battery before initial use, as discussed above.
2. Read all instructions and warnings on the battery before charging the battery.
3. Only charge the supplied battery on the supplied charger.
4. Do not expose the battery to liquid, moisture or heat. Never attempt to burn the battery in a fire.
5. To avoid damage to the charger cable and plug, never pull on the cable to disconnect the battery charger.
6. Do not use the charger if the cable or plug is damaged.
7. Repairs should only be made by authorised dealer or technician.
8. Do not touch the battery poles with any conductive source, or store the battery in a box with other metal objects.
9. Dispose of used battery according to all local and federal laws.

BATTERY & CHARGING

CHECKING THE BATTERY LEVEL

Use the Battery Test button on the top of the battery to see the current level of charge. The LED indicator will be illuminated showing the approximate charge level.



INSTALLING THE BATTERY

WARNING - Before inserting the battery, be sure the Direction Switch is in the OFF (middle) position. Failure to move the switch to the OFF position can result in sudden operation of the tool, which may cause personal injury or property damage. The OFF position prevents the tool from operating by locking the trigger switch.

1. The battery can only be inserted into the tool body in one way. If you are having any difficulty installing the battery, make sure that it is correctly aligned with the tool body
2. Align the battery with the socket on the bottom of the handle, then slide backwards until it locks in place. You should hear an audible 'click'.

To remove the battery, depress the white Battery Release Button on the top of the battery and remove the battery by pulling it forwards.

ASSEMBLY & OPERATION

CHANGING TOOL HEADS



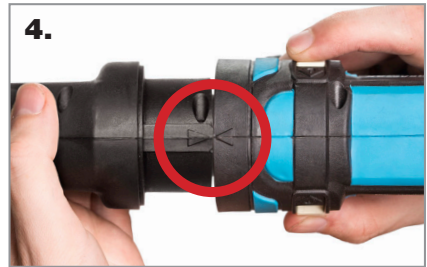
Grip the tool with one hand holding the Tool Head, and place your thumb and forefinger of the other hand on the ARC Switch.



Use your thumb and forefinger to rotate the ARC Switch clockwise into the **Unlocked** position.



Remove the Tool Head by sliding it forward and off. Attach the protective rubber plug on the drive gear for storage.



Insert the new Tool Head, ensuring the two guide arrows are aligned like so. All Tool Heads feature a guide arrow as shown to ensure the Tool Head is inserted correctly.



Slide the Tool Head completely inside the Tool Head Socket.



Use your thumb and forefinger to rotate the ARC Switch anti-clockwise into the **Locked** position.

WARNING - Always remove the battery before changing attachment heads, bits, blades, or attempting repairs, making adjustments or performing maintenance. Never operate the tool unless the ARC Lock Switch is in the **Locked** position.

ASSEMBLY & OPERATION

IMPORTANT SAFETY AND STORAGE INFORMATION

Inspect installed attachments before use

Before use, run the installed attachment on the tool body for about 10 seconds to ensure that all moving parts are running smoothly and there are no loose parts, unusual noises or sparking which would indicate damage. Repair any damage before use.

VARIABLE SPEED TRIGGER

The power tool operates when you pull the trigger switch (refer to Figure 2). The trigger offers variable speed control. Tool speed will increase as the trigger is pulled, and will slow as the trigger is released. Select a speed for the tool that is best for the project that you are doing. The trigger can be locked to prevent tool use by moving the Direction Switch (Forward/Off/Reverse switch) to the OFF position.

DIRECTION SWITCH (FORWARD/OFF/REVERSE)

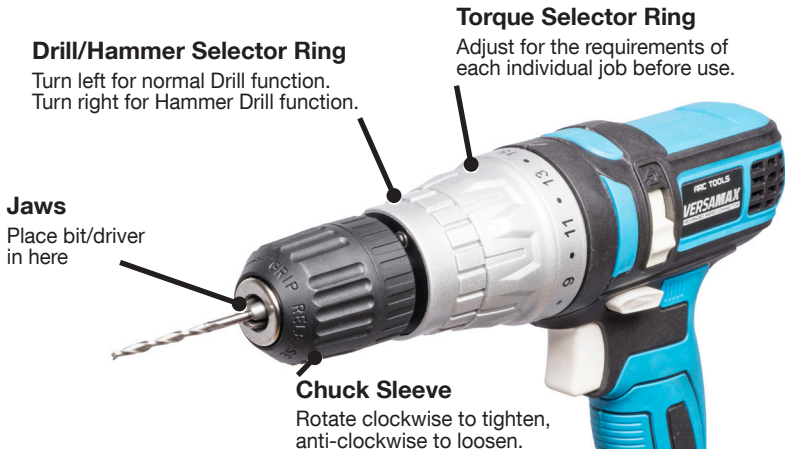
To select the rotation direction (forward or reverse) of the attachment, move the Direction Switch to the desired position.

When looking down on the drill, the switch settings are as follows:

- **Far right:** Reverse or counterclockwise rotation
- **Far left:** Forward or clockwise rotation
- **Center:** Off. Trigger is locked to prevent movement

NOTE: only the drill will work in reverse direction. All other attachments **MUST ONLY** work in forward direction.

OPERATING THE DRILL



TO INSTALL DRILL BITS AND DRIVERS

1. Hold the chuck by the collar while turning the sleeve to adjust the three jaws inside. Refer to the front of the Chuck Sleeve for Grip/Release directions.
2. When the jaws are at the approximate diameter of the bit or driver, insert the shank end of the bit or driver into the chuck opening.
3. Turn the sleeve clockwise until it tightens around the bit or driver. Never “power tighten” (which is holding the sleeve while running the drill). This can cause a loose grip on the bit or driver and potential damage to chuck jaws. Check for bit or driver tightness periodically.
4. To release the bit or driver, hold the chuck collar and turn the sleeve counter-clockwise.

OPERATING THE DRILL

1. Adjust the Direction Switch (Forward / Off / Reverse) for the desired direction of rotation of the bit or driver.
2. Adjust the Torque Selector Ring located just behind the chuck. This ring has numbers from **1** to **15**. Align the desired setting with the pointer indicator embossed on the drill housing. Select **1** for very light torque jobs like driving screws into drywall. Use higher settings (up to **15**) for dense woods and other tough materials. Turn the ring to the “drill bit” symbol when boring holes. Selecting the proper torque setting ensures that the fastener is not driven too deeply, damaging the surface material, or in the worst case, stripping out the hole due to over torque.
3. Pull the Trigger to activate the drill. The drill head has a variable speed trigger, the more you pull the trigger, the faster the drill speed.

OPERATING THE RECIPROCATING SAW

Your VersaMax kit includes two saw blades: one for wood; one for metal. In general, use a blade with smaller teeth to cut harder materials and one with larger teeth for softer materials. Check with your local saw blade supplier for specific blade recommendations.

INSTALLING THE SAW BLADE



1. Insert the provided Allen Key into the side of the Tool Head, then loosen the bolt securing the blade holder.



2. Insert the blade into the holder, making sure the notch on the blade holder lines up with the hole on the end of the blade.



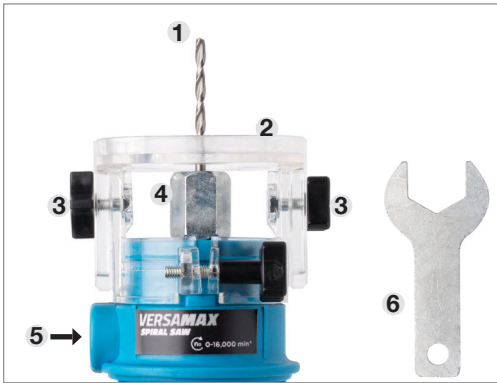
3. Tighten the bolt securely with the Allen Key, checking carefully that the blade cannot move or wobble in any direction.

OPERATING THE SAW

1. The work material must be securely clamped or held in place so it will not shift while the saw is cutting.
2. Move the Direction Switch to the **Forward** position.
3. Squeeze the trigger to start saw motion.
4. Place the blade against the work material, and hold the foot of the saw against the work piece to reduce possible vibration. Then smoothly guide the saw through the material, following the cut line.

WARNING - Never operate the Reciprocating Saw attachment, or any of the other attachments, unless you are wearing ANSI-approved eye protection.

OPERATING THE SPIRAL SAW



SPIRAL SAW COMPONENTS

1. Spiral Saw Cutting Bit
2. Adjustable Depth Guide
3. Depth Guide Locking Knobs
4. Collet Bolt
5. Spindle Locking Button
6. Supplied Collet Wrench

INSTALLING/REMOVING A SPIRAL SAW CUTTING BIT

The bits are held by a collet system. In general, use a bit with smaller flutes to cut harder materials and one with larger flutes for softer materials. Check with your local saw bit supplier for specific recommendations.

1. Press and hold the spindle locking button (5) with one hand, and at the same time loosen the Collet Bolt (4) with the collet wrench (6).
2. Insert the shank of the Cutting Bit into the Collet.
3. To tighten, press and hold the Spindle Locking Button while tightening the collet bolt with the wrench. Be sure the Cutting Bit is secure, but do not over-tighten the bolt. Use only the wrench supplied.

Repeat the same process to remove the Cutting Bit.

ADJUSTING THE DEPTH GUIDE



1. Loosen the locking knobs located on either side of the depth guide.



2. Adjust the depth guide to the desired bit depth setting by sliding the guide back or forth.



3. Once the appropriate bit depth has been selected, re-tighten the two locking knobs.

OPERATING THE SPIRAL SAW

MAKING A CUT

To make a cut with the Spiral Saw, you first drill a guide hole and then continue cutting with the same bit. Use firm, even pressure to make a cut, but do not force the Spiral Saw through unsuitable materials as this may stress and break the Cutting Bit.

1. First, mark the material to be cut
2. Ensure the Direction Switch on the Tool Body is set to **Forward**
3. Adjust the Depth Guide as shown to your desired depth
4. Squeeze the trigger and drill a guide hole on the cut line
5. With the Depth Guide flush against the material, slowly move the Spiral Saw along the cutout line

Spiral Saws work best for cutting plaster board, lamonate and veneer. It is not recommended to use the Spiral Saw with Cement Sheeting or Tiles. These materials may stress the Spiral Saw Bit and cause it to snap.

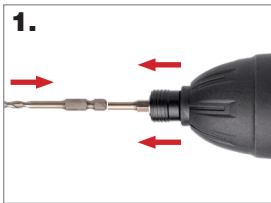
WARNING - Never operate the Spiral Saw attachment, or any of the other attachments, unless you are wearing ANSI-approved eye protection.

OPERATING THE IMPACT DRIVER

IMPORTANT INFORMATION - READ BEFORE USE

1. **Do not use the impact driver as a drill.** Tools equipped with shut-off clutches are not designed for drilling applications. The clutch can shut off automatically and without warning. Attempting to restart drilling after shut-off has been reached can cause the tool to twist out of your hand suddenly.
2. Use only standard 1/4" hexagonal shank accessories with power groove.

INSTALLING IMPACT DRILL BIT



Pull the collet locking sleeve forward, and at the same time, fully insert the desired bit into the chuck.



Release the collet to lock the bit in place.

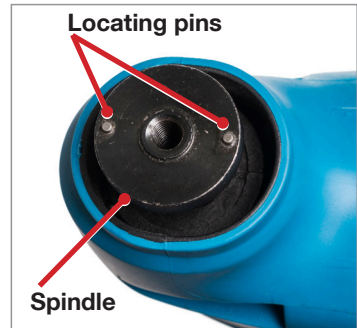
OPERATING THE MULTI PURPOSE TOOL

APPLICATIONS OF THE MULTI PURPOSE TOOL

The Multi Tool is intended for dry sanding small areas and for sawing and scraping with accessories, also for polishing, rasping, cutting and separating.

SPINDLE AND LOCATING PINS

The multi-tool attachments are mounted to a spindle on the tool head and secured with a bolt. To securely attach the attachments and ensure they do not shift during use, align the two locating pins on the spindle with the corresponding holes on the attachment when mounting. See diagram to the right.



MOUNTING SANDING PLATE



1. Remove the bolt with the Allen Key. Fit the sanding plate onto the spindle, align the locating pins and fasten the bolt using the Allen Key.



2. Press the desired sandpaper firmly onto the Velcro surface of the sanding plate and ensure it does not move.

MOUNTING CUT SAW BLADE OR SPATULA



Remove the bolt with the Allen Key. Now fit the desired attachment onto the spindle, align the locating pins, then fasten the bolt using the provided Allen Key.

OPERATING THE AIR PUMP (OPTIONAL ACCESSORY)

Accessory Storage Compartment

Lift the rubber flap to access the pump nozzles and attachments.



Pressure Gauge

Indicates current pressure of inflatable.

INFLATING TYRES

For tyres fitted with a “car tyre valve” (e.g. mountain bike tyres), place the pump either directly on the valve, or use the pneumatic hose.

For tyres with a regular valve, first screw the adapter onto the tyre valve. Then place the air pump on the adapter, or twist the pneumatic hose onto the adapter, and inflate the tyre to the desired pressure.



INFLATING OTHER EQUIPMENT

To pump up inflatable game, sport and leisure items, use either the ball adapter or the air-bed adapter.

MAINTENANCE



DANGER: For your own safety, remove the battery from the VersaMax and set the direction switch to **Off** before performing any maintenance.

When servicing, use only identical original equipment parts. Use of any other part may create a hazard or cause product damage.

EXTERNAL CLEANING

DO NOT use solvents when cleaning plastic parts. Most plastics are susceptible to damage from various types of solvents and may be damaged by their use. Use a clean cloth to remove dirt, dust, oil, grease, etc.

DO NOT at any time allow brake fluid, gasoline, petroleum-based products, penetrating oils, etc, to come in contact with plastic parts. They contain chemicals that can damage, weaken or dissolve plastic.

INTERNAL CLEANING

Power tools are subjected to accelerated wear and possible premature failure when they are used on fiberglass, wall-board, spackling, compounds or plaster. The chips and grindings from these materials are highly abrasive to parts such as bearings, brushes, commutators, etc. During any use on these materials it is extremely important that the tool is cleaned frequently by blowing out with a compressed air jet.

DANGER - It is critical that you wear safety goggles or safety glasses with side shields and a dust mask while blowing dust out of a power tool with a compressed air jet. Failure to take these safety precautions could result in permanent eye or lung damage.

CHARGER CORD MAINTENANCE

To avoid shock or fire hazard, replace the cord immediately if it is worn or damaged in any way.

LUBRICATION

All bearings in these tools are lubricated with high grade lubricant suitable for the life of the unit under normal conditions. No further lubrication is required.

IMPORTANT SAFETY INFORMATION

WARNING - Read all safety warnings and all instructions. Failure to follow the warnings and instructions may result in electric shock, fire and/or serious injury. Save all warnings and instructions for future reference.

“VersaMax” refers to the VersaMax driver, and all authorised Tool Heads and accessories.

1. Work area safety

- a. Keep work area clean and well lit. Cluttered or dark areas invite accidents.
- b. Do not operate the VersaMax in explosive atmospheres, e.g. in the presence of flammable liquids, gases or dust. Power tools create sparks which may ignite dust or fumes.
- c. Keep children and bystanders away while operating a the VersaMax. Distractions can cause you to lose control.

2. Electrical safety

- a. The VersaMax charger plug must match the outlet. Never modify the plug in any way. Do not use any adapter plugs with earthed (grounded) power tools. Unmodified plugs and matching outlets will reduce risk of electric shock.
- b. Avoid body contact with earthed or grounded surfaces, such as pipes, radiators, ranges and refrigerators. There is an increased risk of electric shock if your body is earthed or grounded.
- c. Do not expose the VersaMax or any of it's accessories to rain or wet conditions. Water entering a power tool will increase the risk of electric shock.
- d. Do not abuse the charger cord. Never use the cord for carrying, pulling or unplugging the charger. Keep cord away from heat, oil, sharp edges or moving parts. Damaged or entangled cords increase the risk of electric shock.
- e. If operating the VersaMax in a damp location is unavoidable, use a residual current device (RCD) protected supply. Use of an RCD reduces the risk of electric shock.

3. Personal safety

- a. Stay alert, watch what you are doing and use common sense when operating the VersaMax. Do not use the VersaMax while you are tired or under the influence of drugs, alcohol or medication. A moment of inattention while operating power tools may result in serious personal injury.
- b. Use personal protective equipment. Always wear eye protection. Protective equipment such as dust mask, non-skid safety shoes, hard hat, or hearing protection used for appropriate conditions will reduce personal injuries.

IMPORTANT SAFETY INFORMATION

- c. Prevent unintentional starting. Ensure the switch is in the off-position before connecting the battery pack, picking up or carrying the VersaMax.
- d. Remove any adjusting key or wrench before turning the VersaMax on. A wrench or a key left attached to a rotating part of the VersaMax may result in personal injury.
- e. Do not overreach. Keep proper footing and balance at all times. This enables better control of the VersaMax in unexpected situations.
- f. Dress properly. Do not wear loose clothing or jewellery. Keep hair and clothing away from moving parts. Loose clothes, jewellery or long hair can be caught in moving parts.
- g. If devices are provided for the connection of dust extraction and collection facilities, ensure these are connected and properly used. Use of dust collection can reduce dust-related hazards.

4. VersaMax use and care

- a. Do not force the VersaMax. Use the correct Tool Head for your application. The correct tool will do the job better and safer at the rate for which it was designed.
- b. Do not use the VersaMax if the switch does not turn it on and off. Any power tool that cannot be controlled with the switch is dangerous and must be repaired.
- c. Disconnect the battery pack from the power tool before making any adjustments, changing accessories, or storing the VersaMax. Such preventive safety measures reduce the risk of starting the VersaMax accidentally.
- d. Store the VersaMax out of reach of children and do not allow persons unfamiliar with the VersaMax or these instructions to operate the VersaMax. Power tools are dangerous in the hands of untrained users.
- e. Maintain the VersaMax. Check for misalignment or binding of moving parts, breakage of parts and any other condition that may affect the VersaMax's operation. If damaged, have the VersaMax repaired before use. Poorly maintained power tools may lead to accidents.
- f. Keep cutting tools sharp and clean. Properly maintained cutting tools with sharp cutting edges are less likely to bind and are easier to control.
- g. Use the VersaMax, Tool Heads and accessories in accordance with these instructions, taking into account the working conditions and the work to be performed. Use of the VersaMax for uses different from those intended could result in a hazardous situation.

IMPORTANT SAFETY INFORMATION

5. Battery use and care

- a. Recharge only with the charger specified by the manufacturer. A charger that is suitable for one type of battery pack may create a risk of fire when used with another battery pack.
- b. Use the VersaMax only with specifically designated battery packs. Use of any other battery packs may create a risk of injury and fire.
- c. When battery pack is not in use, keep it away from other metal objects, like paper clips, coins, keys, nails, screws or other small metal objects, that can make a connection from one terminal to another. Shorting the battery terminals together may cause burns or a fire.
- d. Under abusive conditions, liquid may be ejected from the battery; avoid contact. If contact occurs, flush with water. If liquid contacts eyes, seek medical help immediately. Liquid ejected from the battery may cause irritation or burns.

6. Service

Have the VersaMax serviced by a qualified repair person using only identical replacement parts. This will ensure that the safety of the VersaMax is maintained.

7. Additional power tool safety warnings

- a. Use auxiliary handle(s), if supplied with the tool. Loss of control can cause personal injury.
- b. Hold the VersaMax by insulated gripping surfaces when performing an operation where the cutting accessory may contact hidden wiring or its own cord. Cutting accessory contacting a “live” wire may make exposed metal parts of the power tool “live” and could give the operator an electric shock.

BATTERY CHARGER INSTRUCTION CORRECTIONS

1. For use with Li-ion battery only, for power tool MOD-HT06-18
2. The VersaMax is not intended for use by persons (incl. children) with reduced physical, mental or sensory capabilities, or lack of experience and knowledge, unless given direct supervision or instructed on correct use of the VersaMax by a person responsible for their safety.
3. Children should be supervised to ensure that they do not play with the appliance.
4. If the supply cord is damaged, it must be replaced by the manufacturer, its service agent or similarly qualified persons in order to avoid a hazard.

VERSAMAX WARRANTY

The VersaMax Body and Tool Heads are covered by a 5 Year Warranty. The VersaMax Battery and Charger are covered by a 1 Year Warranty. This warranty does not include wear and tear on consumable parts. Proof of purchase is required.

WARRANTY PROCESS

Newstyle Direct Pty Ltd warrants each new VersaMax kit to the original purchaser thereof, to be used and maintained properly. This shall be in lieu of any other warranty, expressed or implied, including, but not limited to, any implied warranty of merchantability or fitness for a particular purpose.

Newstyle Direct Pty Ltd shall repair or replace, at its option and without cost to the original purchaser, any VersaMax or warranted part that has been found to be defective and is within the period of the warranty. All freight to and from Newstyle Direct Pty Ltd is to be paid for by the customer.

OUR ADDRESS: Newstyle Direct, 18 Montefiore Street, Fairfield VIC 3078

The liability of Newstyle Direct Pty Ltd under this warranty shall be limited solely to repair or replacement of the VersaMax body and warranted parts within the warranty period; and Newstyle Direct Pty Ltd shall not be liable, under any circumstances, for consequential or incidental damages, including, but not limited to, personal injury or labor costs. This warranty gives the original purchaser specific legal rights and you may also have other rights which vary from state to state.

Under no circumstances will Newstyle Direct Pty Ltd be responsible for any expense in connection with any repairs made by anyone other than the Newstyle Direct Pty Ltd or authorised repairers, unless repairs have been specifically authorised in writing by Newstyle Direct Pty Ltd.

If you have any questions about your warranty registration, you can contact us at:

Phone: (03) 9489 1177 (Mon-Fri 9am-5pm)

Email: enquiries@newstyledirect.com.au

TOOL SPECIFICATIONS

DRILL / DRIVER

RPM (no-load): 0-550 min⁻¹
Chuck (max.): 10mm
Torque (max.): 20 Nm

IMPACT DRIVER

RPM (no-load): 0-2200 min⁻¹

SPIRAL SAW

RPM (no-load): 0-16,000 min⁻¹

RECIPROCATING SAW

RPM (no-load): 0-2800 min⁻¹
Blade travel (stroke): 15mm

MULTI-TOOL

RPM (no-load): 0-20,000 min⁻¹

AIR PUMP (OPTIONAL EXTRA)

Max. working pressure: 8bar

BATTERY / CHARGER

BATTERY - VMB20

Type: Lithium Ion
Voltage: 20V
Capacity: 2.0Ah

CHARGER - IFC-HT22H1-18

Input: 220-240V~ 50Hz 27W
Output: 21V = 1A



Scan to learn
more about the
VersaMax online:



ARC VERSAMAX



WARNING To reduce risk of injury or damage user must read and understand all instructions before use. Incorrect use may cause harm or void the warranty.

Proudly distributed in Australia by:

Newstyle Direct Pty Ltd

enquiries@newstyledirect.com.au

(03) 9489 1177 newstyledirect.com.au

**NEWSTYLE
DIRECT** 
Established 1990